



## Boxing Scoring System

### WSB - Quick Installation Guide

Document Version 1.0 | November 2017

---

## Caution and safety precautions

- Never use any other charger than the supplied or a type approved by Swiss Timing. This could destroy the battery, cause damage to unit, and possible cause personal injury due to fire or/and electrical shock.
- Never bypass a power cord ground lead by breaking off the ground pin, or by using inappropriate extension cords or adapters.
- Never plug a power cord into the AC power source until you have made sure that all installation, cabling and power levels, are proper, and that the applicable procedures in this manual have been followed.
- Protect the equipment against splashing, rain and excessive sun rays.
- Never use the device if it is damaged or insecure.
- Verify the selection of the power distribution.
- Verify that the voltage quoted on the rating plate is the same as your voltage. Connect the appliance only to power sockets with protective earth. The use of incorrect connection voids warranty.
- This program may be modified at any time without prior notification.
- Do not open the case; there is nothing that needs servicing inside it. Nevertheless, if the case must be opened, you must call for some qualified personnel. The power supply cable must be disconnected before opening the case.
- During the transport of all Swiss Timing equipment delivered with a reusable carry case, the said case should be used at all times. This is imperative to limit the damage, such as shocks or vibration that can be caused to the units during transport.
- The same cases should also be used when returning equipment to Swiss Timing for repair. Swiss Timing reserves the right to refuse all guarantees if this condition is not fulfilled.
- If the installation includes a horn, be sure to maintain a sufficient security distance from the public.

## Documentation Updates

Swiss Timing SP reserves the right to make improvements in the products described in this documentation at any time without prior notice. Furthermore, Swiss Timing SP reserves the right to revise this documentation in its content at any time and without any obligation to notify any person or organization of such revision.

## Disclaimer

The information provided in this documentation has been obtained from sources believed to be reliable, accurate and current. However, Swiss Timing SP makes no representation or warranty, express or implied, with respect, but not limited to, the completeness, accuracy, correctness and actuality of the content of this documentation. Swiss Timing SP specifically disclaims any implied warranty of merchantability, quality and/or fitness for any particular purpose. Swiss Timing SP shall not be liable for errors contained in this documentation or for incidental or consequential damages in connection with the supply, performance or use of this documentation.

## Environment



This symbol indicates that this product should not be disposed with household waste. It has to be returned to a local authorized collection system. By following this procedure you will contribute to the protection of the environment and human health. The recycling of the materials will help to conserve natural resources.

## Copyright

© Swiss Timing SP

All rights reserved.

This documentation may not, as a whole or in part, be copied, translated, reproduced, transmitted or reduced and/or stored to any electronic medium or machine-readable form without the prior written consent of Swiss Timing SP

**TABLE OF CONTENTS**

<b>1</b>	<b>INTRODUCTION.....</b>	<b>1</b>
<b>2</b>	<b>BOXING SOFTWARE INSTALLATION .....</b>	<b>2</b>
2.1	Downloading the Software Installer .....	2
2.2	Installing WinBPM 3.0.0.xxx.....	2
2.3	Install Software Updates (e.g. "WSB Update 2018 1.0.exe") .....	6
<b>3</b>	<b>APPENDIX A .....</b>	<b>7</b>
3.1	Version History.....	7



## **1 INTRODUCTION**

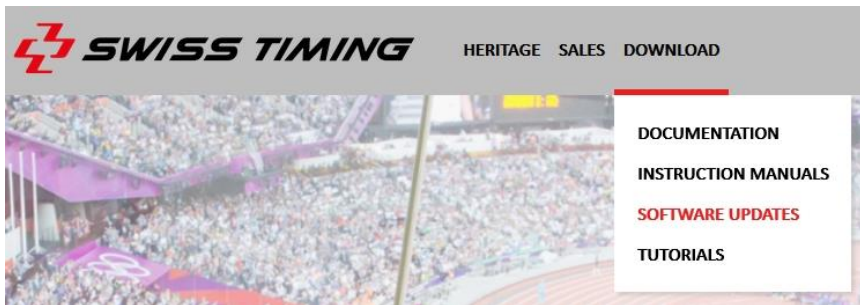
### **About This Document**

This document is intended as an Installation Guide for the Boxing Scoring System.

## 2 BOXING SOFTWARE INSTALLATION

### 2.1 Downloading the Software Installer

- Visit [www.swisstiming.com](http://www.swisstiming.com)
- In order to install or update the scoring software, navigate to "Software updates" on the website.



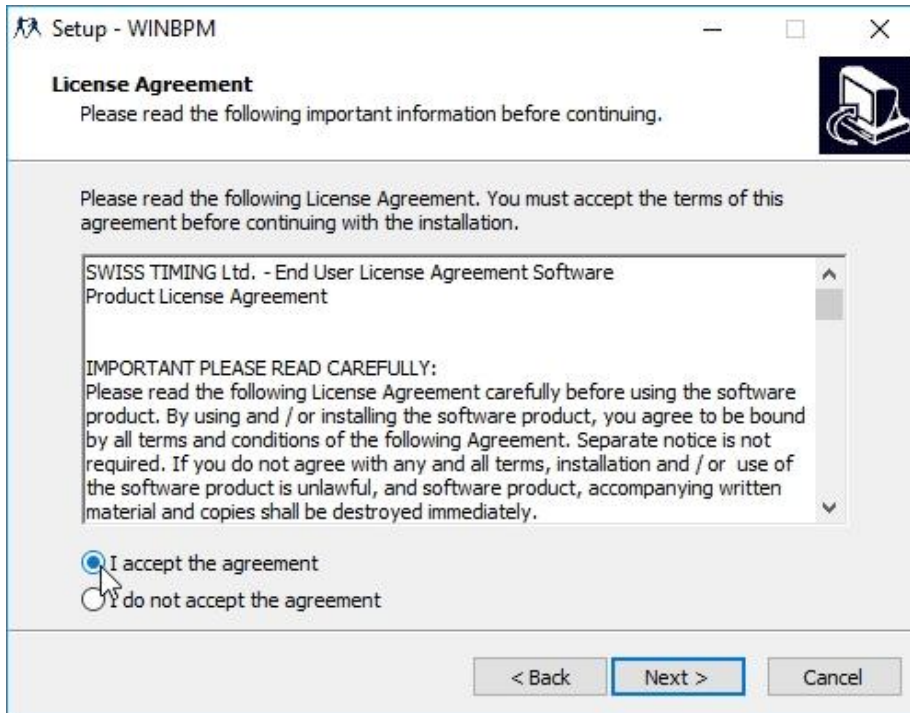
- Download all necessary files for Boxing
- Visit the section "Tutorials" in the Download area to find helpful videos about the Boxing Scoring System

### 2.2 Installing WinBPM 3.0.0.xxx

- After download, run the "WINBPM\_3.0.0.xxx\_setup.exe" file
- The installer will guide you through the installation process

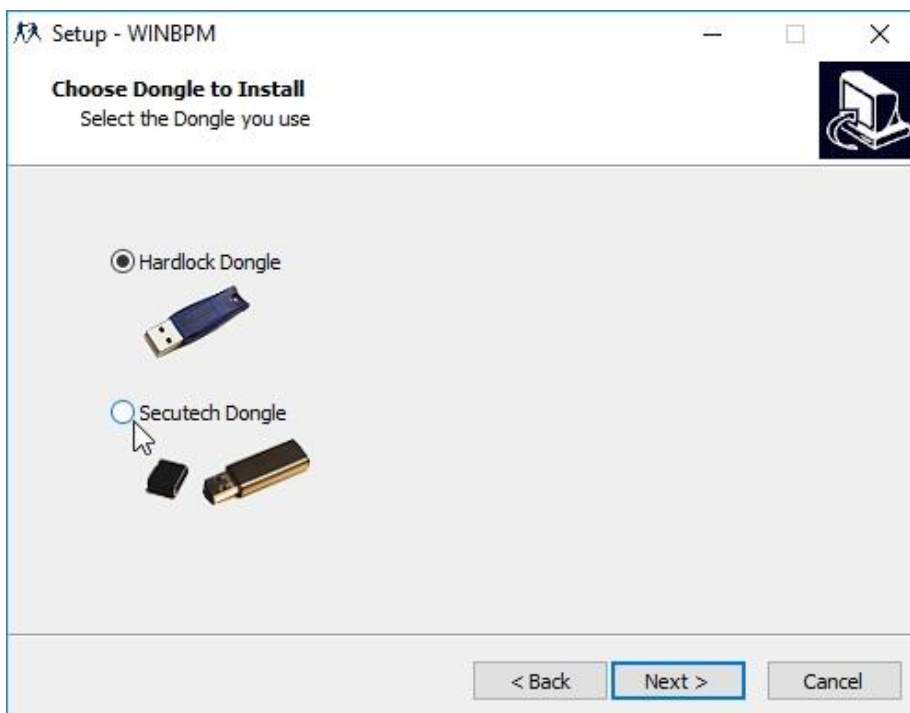


- When asked, accept the agreement

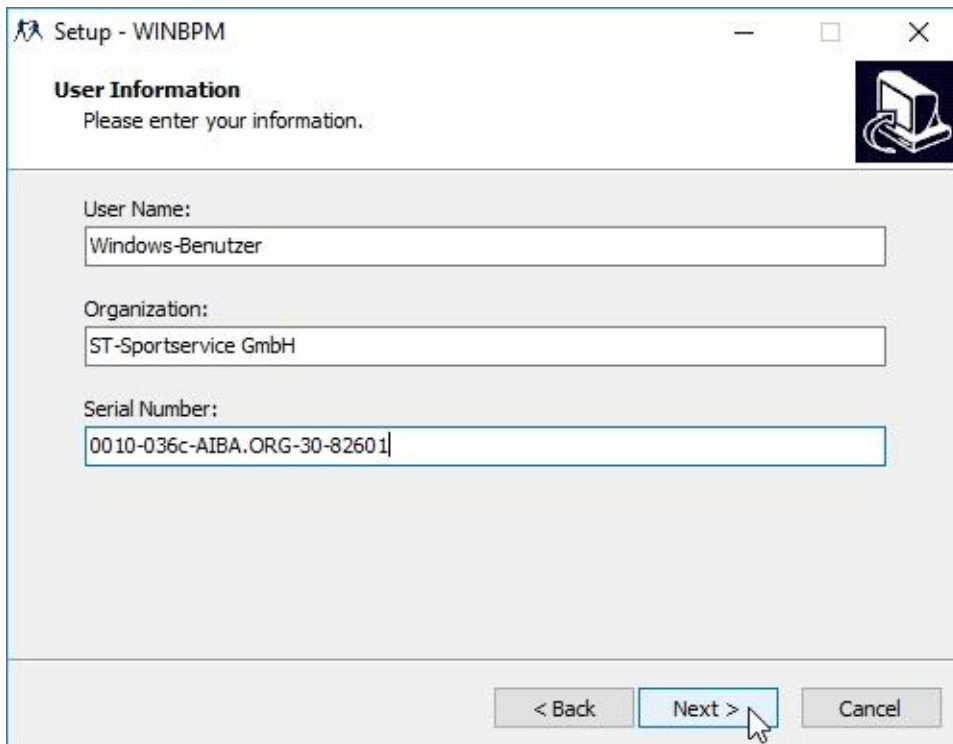


- Choose the correct USB dongle type (blue or black)

**Note:** The blue dongle is for Windows versions up to Windows 7, the black dongle is for Windows 8 and 10.

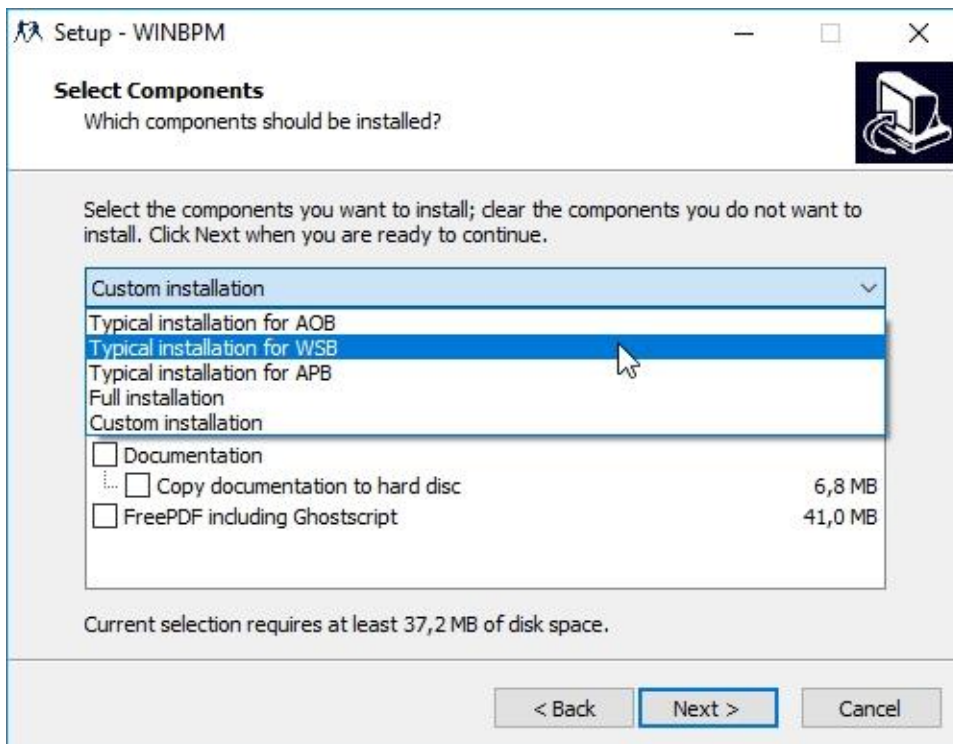


- Enter the license code that you received with your dongle. For WSB systems you normally have to enter the following AIBA license code: 0010-036c-AIBA.ORG-30-82601



The screenshot shows the 'Setup - WINBPM' window with the 'User Information' section. The text 'Please enter your information.' is displayed. There are three input fields: 'User Name' containing 'Windows-Benutzer', 'Organization' containing 'ST-Sportservice GmbH', and 'Serial Number' containing '0010-036c-AIBA.ORG-30-82601'. At the bottom, there are three buttons: '< Back', 'Next >', and 'Cancel'. A mouse cursor is pointing at the 'Next >' button.

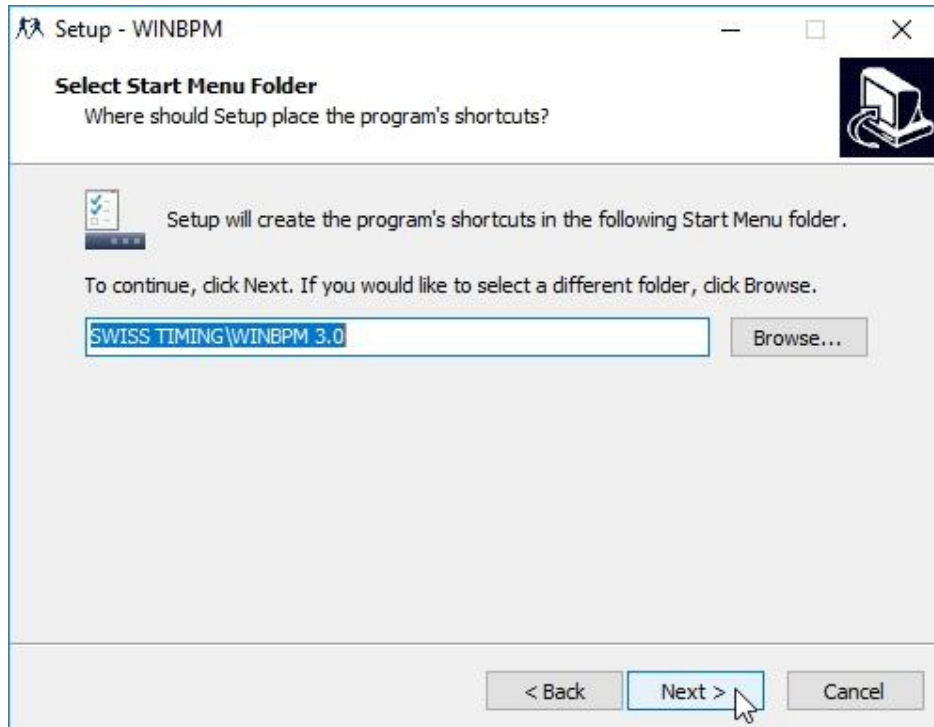
- Choose "Typically installation for WSB" or "Full installation" in the next window



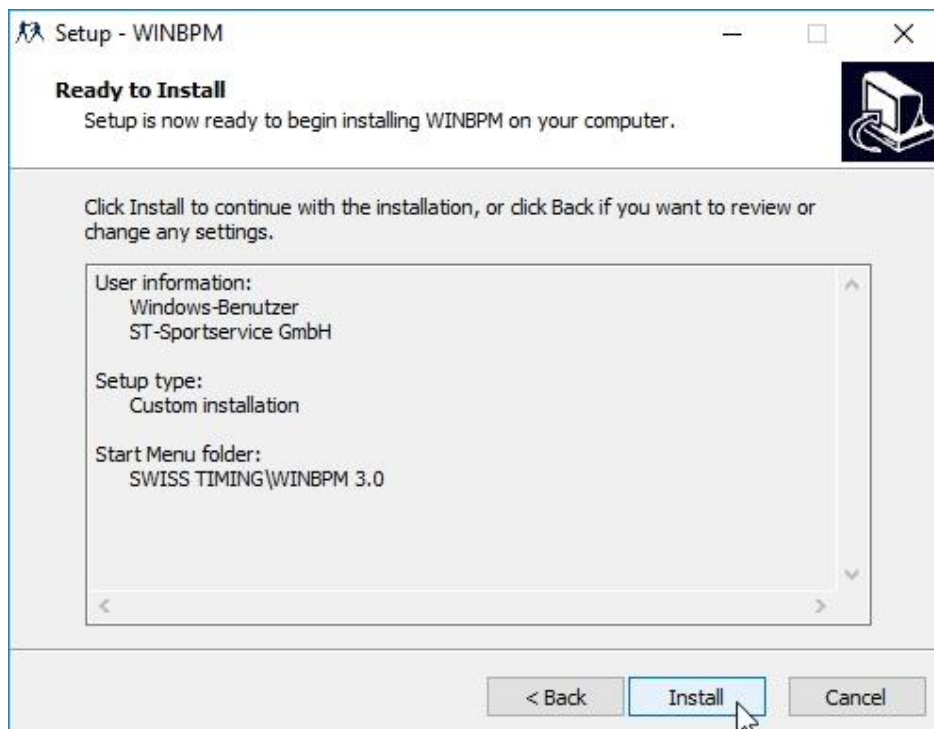
The screenshot shows the 'Setup - WINBPM' window with the 'Select Components' section. The text 'Which components should be installed?' is displayed. Below this, there is a dropdown menu with 'Custom installation' selected. The dropdown list is open, showing options: 'Custom installation', 'Typical installation for AOB', 'Typical installation for WSB' (highlighted with a blue bar and a mouse cursor), 'Typical installation for APB', 'Full installation', and 'Custom installation'. Below the dropdown, there are three checkboxes: 'Documentation', 'Copy documentation to hard disc' (with a size of 6,8 MB), and 'FreePDF including Ghostscript' (with a size of 41,0 MB). At the bottom, there is a note: 'Current selection requires at least 37,2 MB of disk space.' and three buttons: '< Back', 'Next >', and 'Cancel'.



- Clicking [Next] in the following window will guide you to the last page of the installer, where you can start the installation

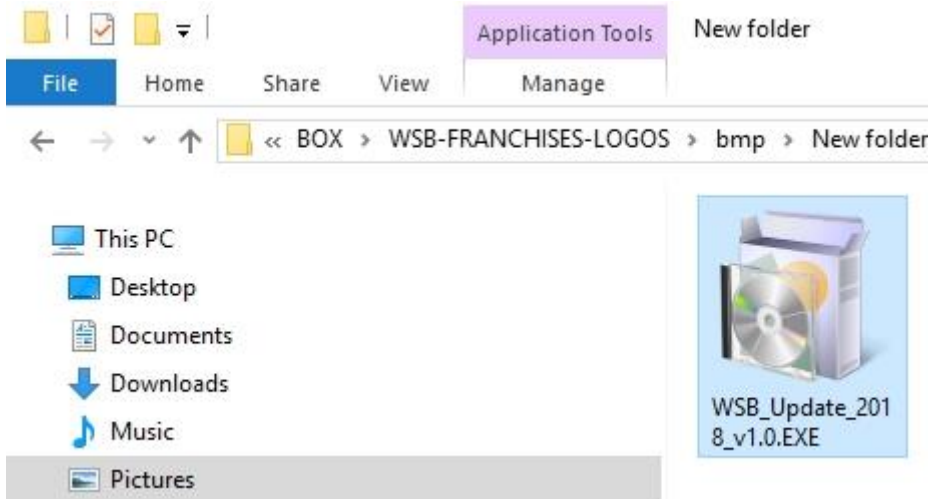


- Perform the installation by clicking [Install]

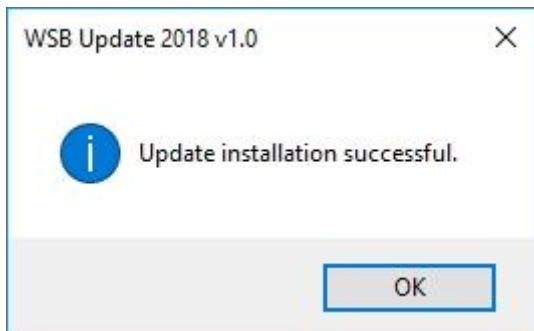


### 2.3 Install Software Updates (e.g. "WSB Update 2018 1.0.exe")

- Download any additional software updates provided on the Swiss Timing website
- Prior to the installation of any update provided, verify that the latest version of WINBPM\_3.0.0.xxx\_setup.exe has been installed before
- To install the update, run the respective exe file from your Download folder



- A message will inform you about the successful installation



### 3 APPENDIX A

#### 3.1 Version History

Version	Date	Modifications since last version
1.0	30.11.2017	Initial version

NOTES

---

Swiss Timing LTD  
P.O. Box 138, Rue de l'Envers 1  
CH-2606 Corgémont - Switzerland

Phone +41 32 488 36 11  
info@swisstiming.com  
www.swisstiming.com

A COMPANY OF THE  **SWATCH GROUP**