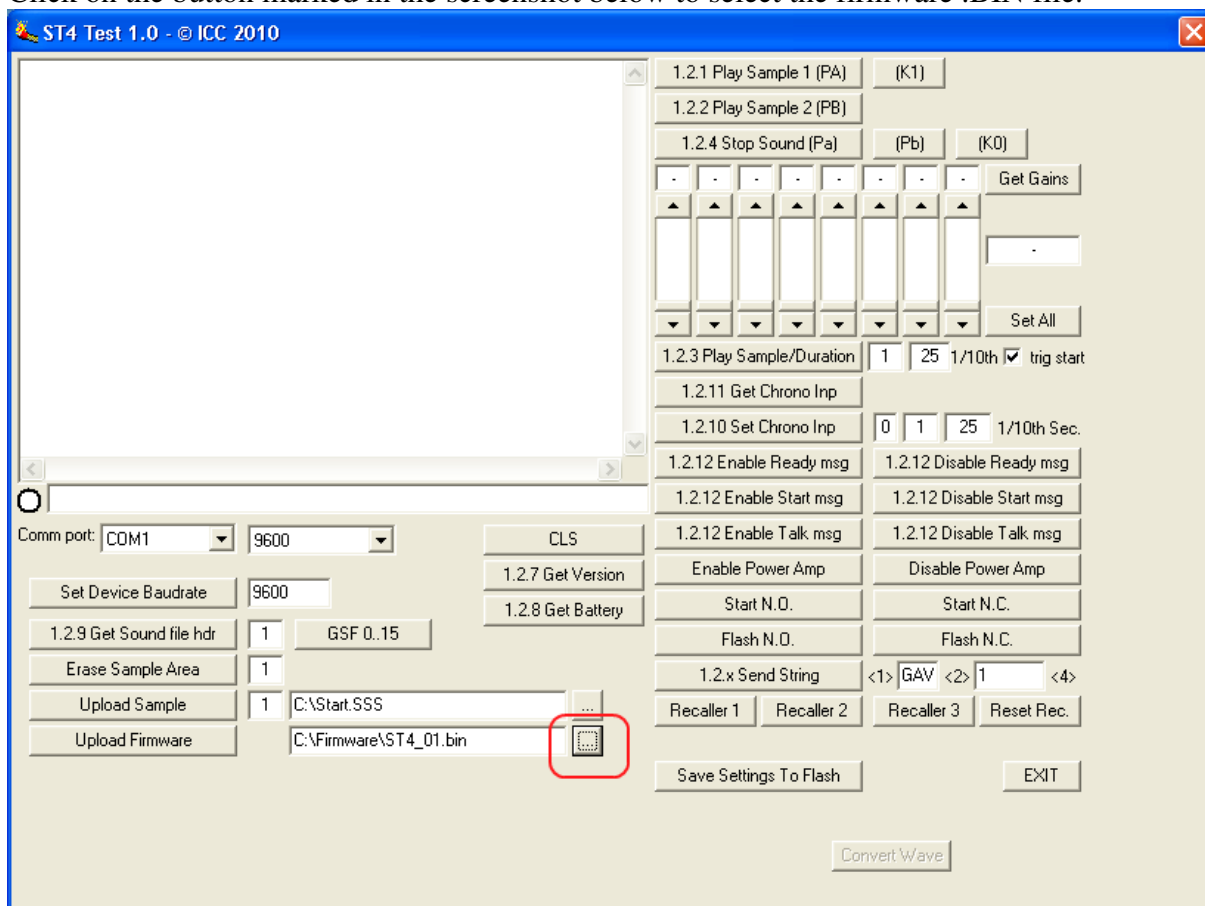
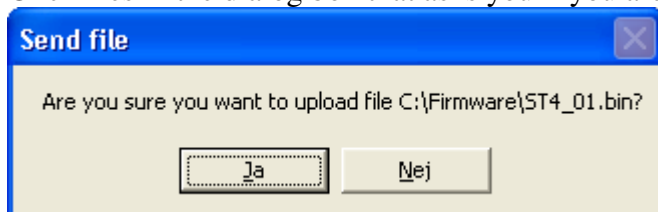


# How to update Start Time IV firmware

1. Make sure you have the computer connected to the Start Time Serial port and that the Start Time is running.
2. Start the ST4 Test program.
3. Click on the **1.2.7 Get Version** button and look at the reply to make sure you have connection to the ST4.
4. Click on the button marked in the screenshot below to select the firmware .BIN file.



5. Click on the button called **Upload Firmware**.
6. Click Yes in the dialog box that asks you if you are sure you want to upload the file.



7. You should now see a progressbar that is filling up as the firmware file is sent to the ST4. The display on the ST4 should also indicate progress.
8. When everything is finished you should see a message saying all is OK and the ST4 will restart itself.